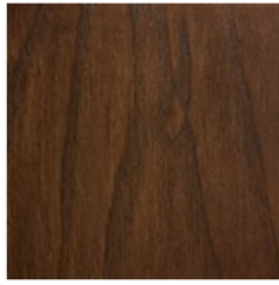


# Wood Finishes



Amarone (AA)



Ansell (RM)



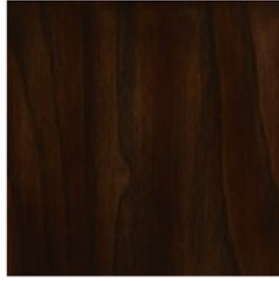
Antique Gold Leaf -  
Wood (AU)



Antique Silver - Wood (AX)



Arles (AJ)



Avery (AV)



Barrington (BT)



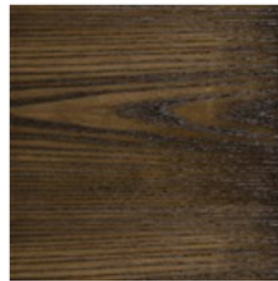
Birdsong (BA)



Boardwalk Gray (BD)



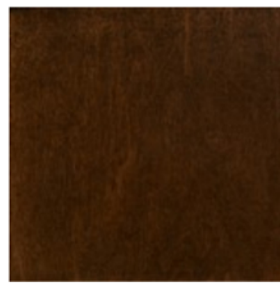
Brooklands Gray (BG)



Brownstone (BZ)



Brushed Linen (BX)



Caramel (CR)



Casa Blanca (CB)



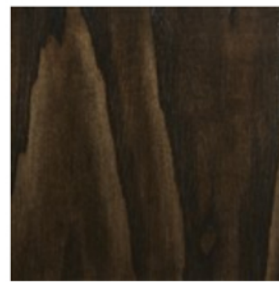
Cliffside Gray (CY)



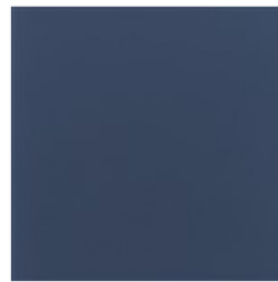
Coventry (CV)



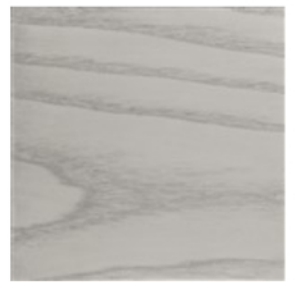
Cumberland (CF)



Dark Embers (DE)



Deep Ellum (DL)



Dove Gray (DG)

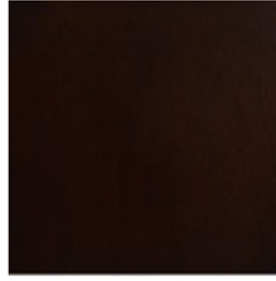
# Wood Finishes



Dupree (DP)



Eaton (EA)



Espresso (ES)



Finley (FI)



Flaxen Stone (FO)



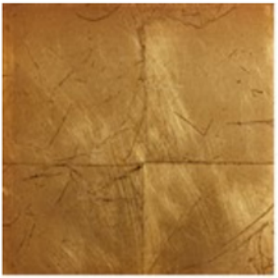
Fossil (FJ)



Foundry (FY)



Glacier (GC)



Glossed Amber Leaf (GA)



Glossed Bronze Leaf (GB)



Glossed Silver Leaf (GS)



Gold Thread (TG)



Hampton (HM)



Harrison Gray (HS)



Havana (HV)



Ivory Dust (ID)



Lace (LC)



Langdon (LG)

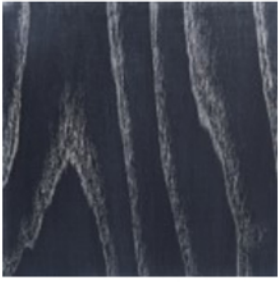


Luxe (LX)



Marquis (MQ)

# Wood Finishes



Midnight Mink (MY)



Milk Paint (MK)



Mink Leaf - Wood (MX)



Miy Antiqued Dark Flat (YA)



Miy Antiqued Light Flat (YB)



Miy Combination Finish (YC)



Miy Distressed Dark Flat (YD)



Miy Distressed Light Flat (YE)



Miy Multi-Surface (YM)



Miy Pristine Flat (YF)



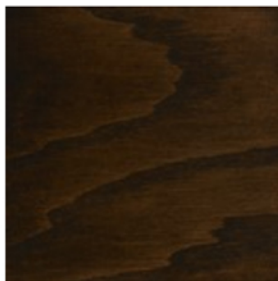
Miy Pristine Gloss (YS)



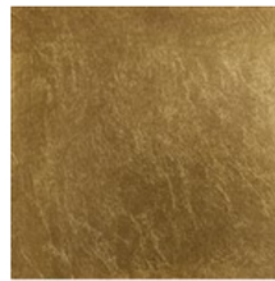
Moon Shadow (MH)



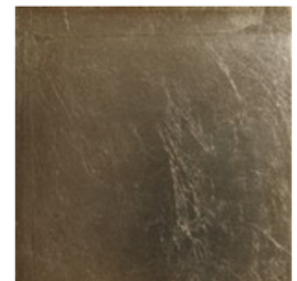
Moonstruck (MV)



New Rich Walnut (NR)



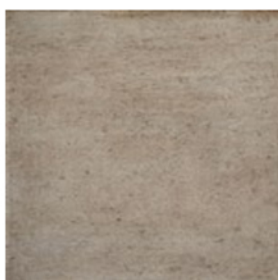
Noble Leaf - Wood (NW)



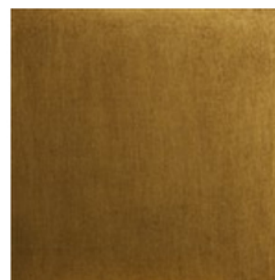
Odessa (OS)



Oiled Java (OJ)



Pebble Path (EP)



Picasso Moon (PC)



Promiseland (PL)



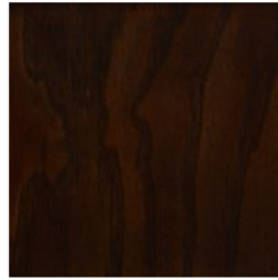
# Wood Finishes



Pure White (PE)



Rider (RD)



Rochester (RC)



Serendipity (SP)



Shaded Slate (SH)



Silk Road (SR)



Silver Briar (SA)



Silver Shimmer (LV)



Silver Thread (TS)



Silverthorne (ST)



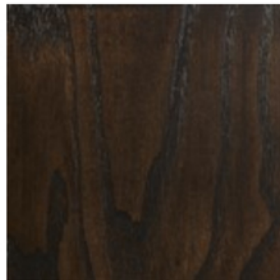
Sparrow (SO)



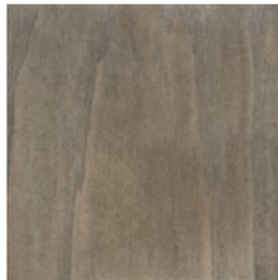
Spice (SY)



Supreme Walnut (SU)



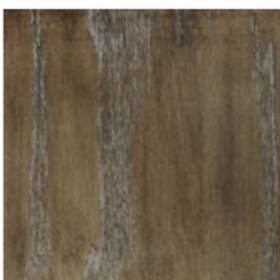
Sussex (SX)



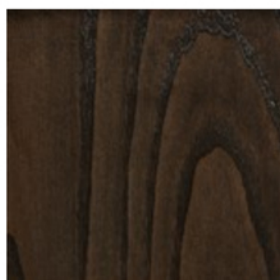
Terrain (TE)



White Frost (WT)



Woodcliff (MM)



Woodland (WD)



Wrenn (WZ)